

# *Chalet Clovis*



*Beaumier*  
**L'ALPAGA**  
Alt. 1100 M MEGÈVE ALPES



## CHALET CLOVIS

Away from Megève, perched at an altitude of 1100 metres and facing Mont-Blanc, discover a unique haven of peace. A chalet nestling in the heart of nature, in a cosy little hamlet.

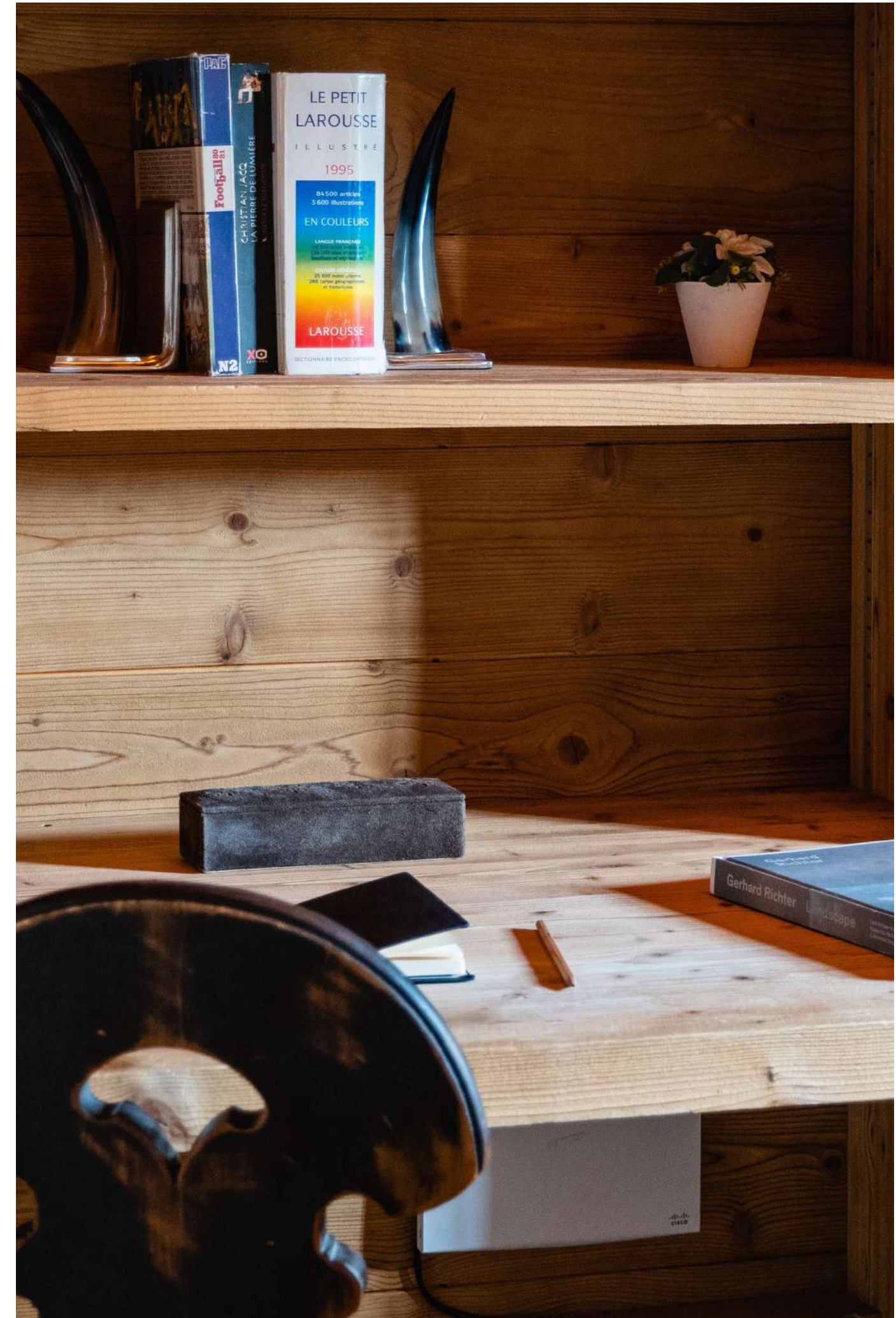
Combining an intimate atmosphere with hotel services, Chalet Clovis is the ideal place for an exceptional holiday.

With a surface area of 255m<sup>2</sup>, this chalet has been designed in the purest Megevanne tradition. The chalet is designed to accommodate up to 10 people over 3 floors, with its 4 bedrooms and 4 bathrooms. The large terraces and balconies are a natural invitation for guests to enjoy a moment of contemplation, facing the mountains.

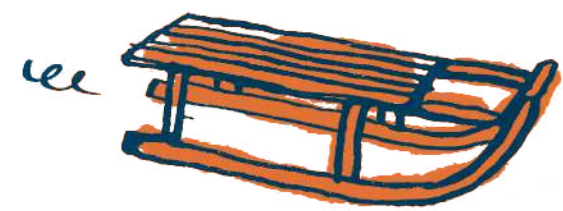




CHALET CLOVIS

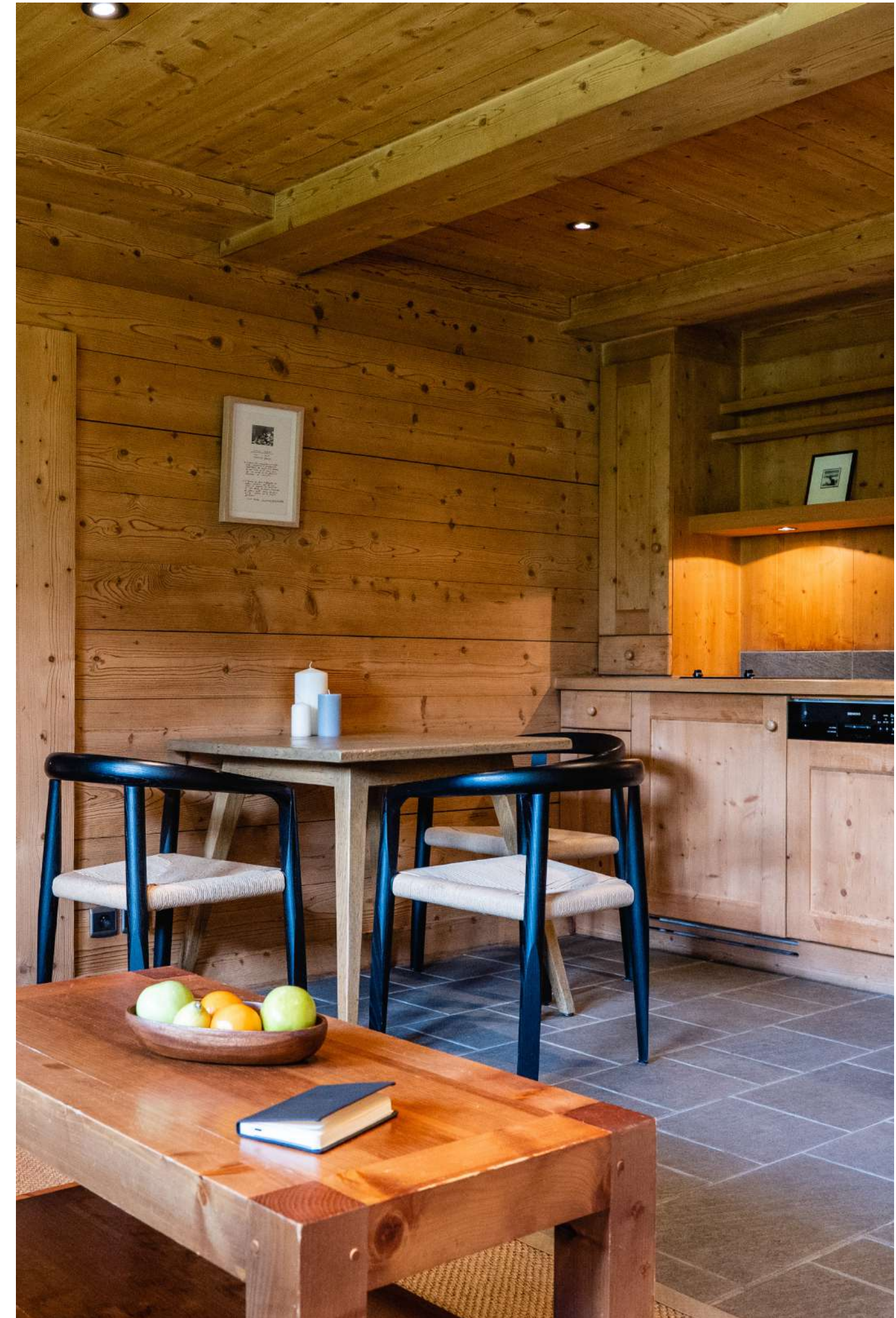


CHALET CLOVIS





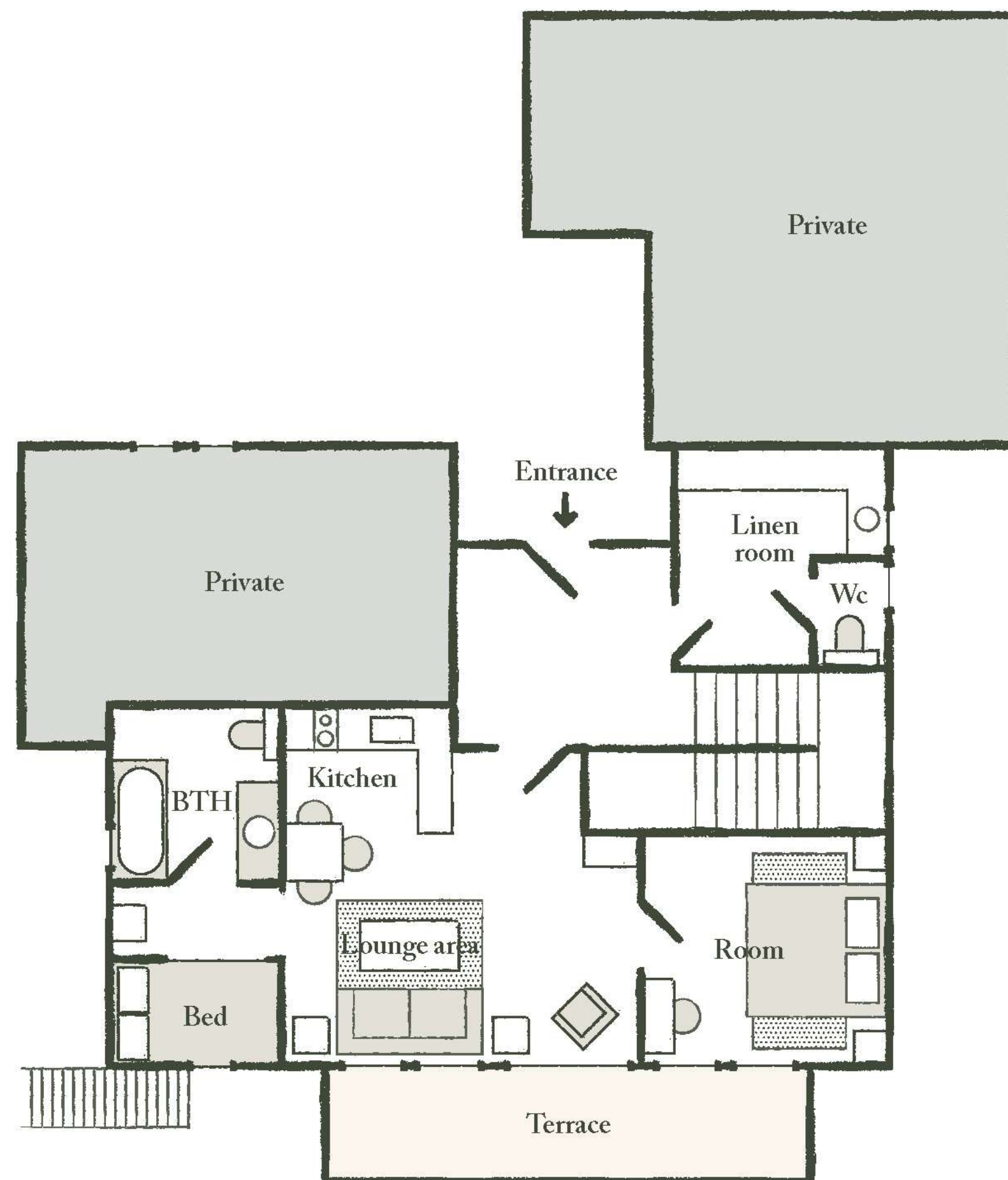
CHALET CLOVIS





## THE GARDEN FLOOR

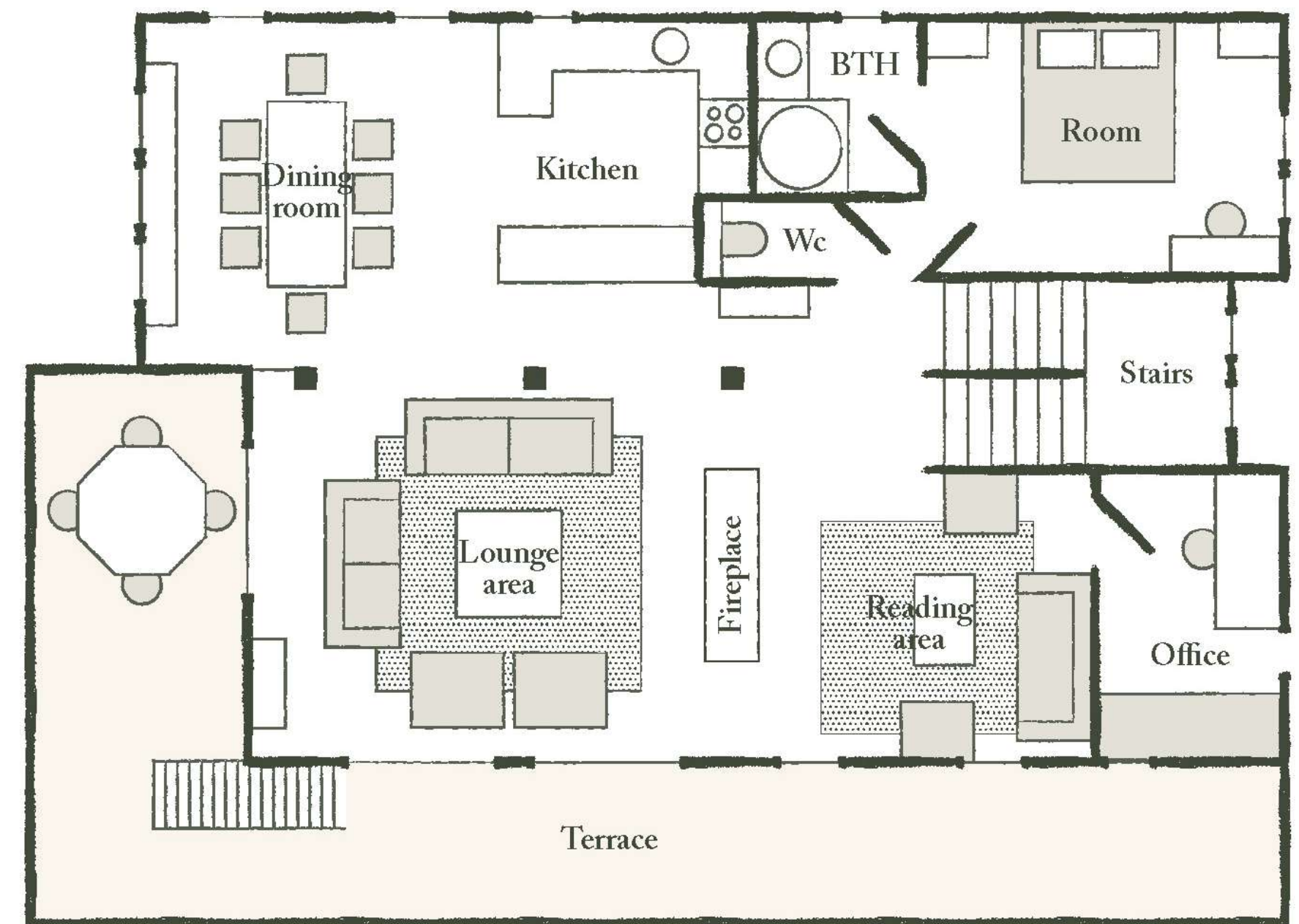
It comprises a private studio with 1 bedroom and a Savoyard bed, a bathroom or shower and toilet, a kitchen with dining area and a cosy lounge opening onto the private terrace, a laundry room, separate toilet and washbasin.





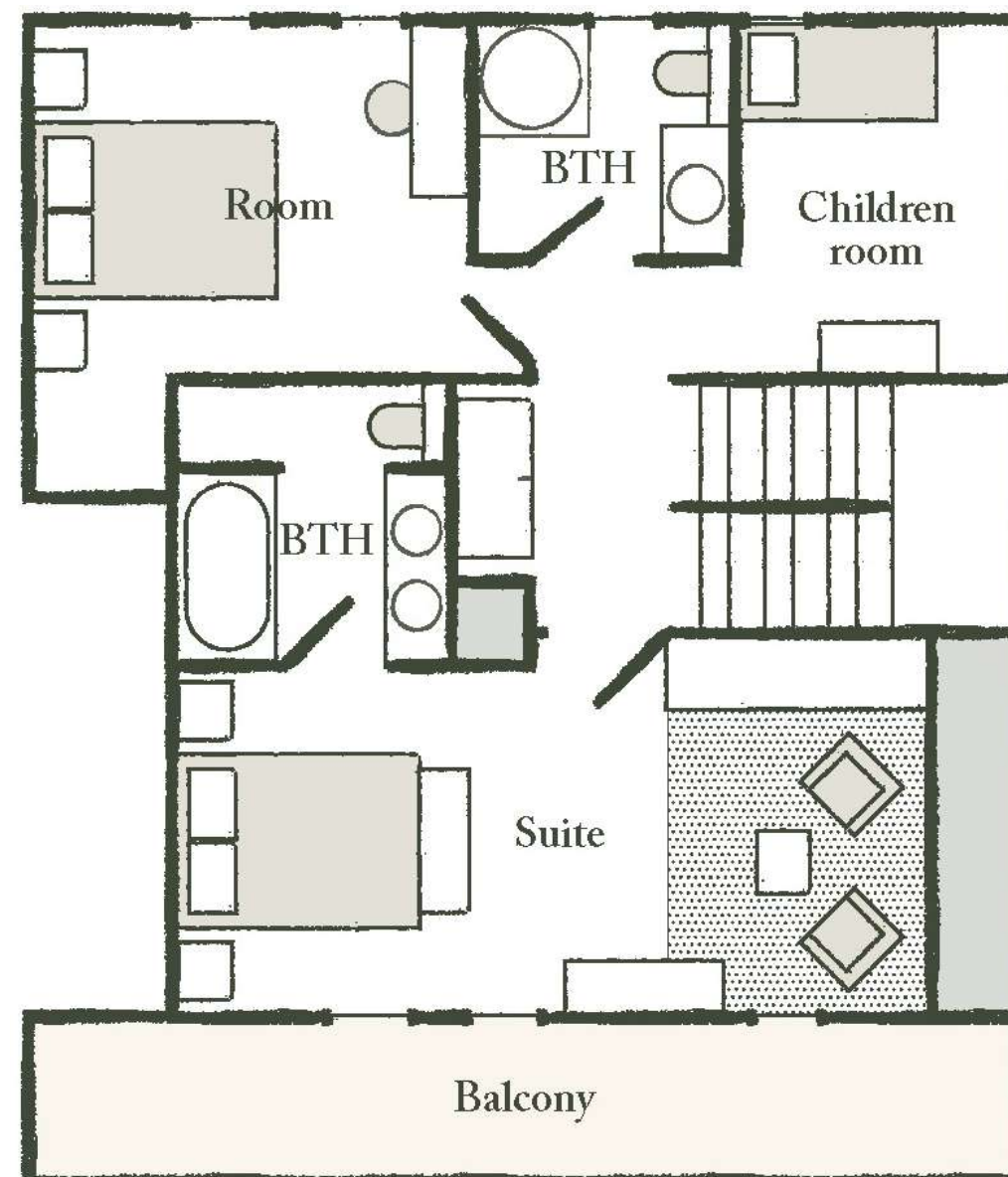
## THE MAIN FLOOR

Large living room with large sofas. The large French windows open onto the corner balcony.  
Adjoining the lounge is the dining room, with its large oak table.  
The double bedroom has its own shower room.  
Next to the living room is a reading area and a small study/library with a single bed. Finally, there's the contemporary, fully-equipped kitchen, ideal for family get-togethers.



## THE TOP FLOOR

2 bedrooms with character and 2 bathrooms occupy this charming floor, under the wooden roof structure: the master bedroom with its en suite bathroom and private balcony is absolutely romantic. Finally, for young adventurers, there is a children's area under the roof structure with a single bed.



## THE HOTEL L'ALPAGA\*\*\*\*\*

Staying in Chalet Clovis also means having access to the areas and services of L'Alpaga:

### LA TABLE

*de L'Alpaga*

La Table de L'Alpaga, a Michelin-starred restaurant, offers gourmet Savoyard cuisine created by Alexandre Baule. Our Chef's creations celebrate the wealth of local produce with respect and ingenuity.

Only open in winter

### le bistrot

*de L'Alpaga*

Here, Chef Alexandre Baule offers a range of daily specials. A place to meet for lunch, dinner or a cocktail, indoors or on the terrace with its splendid mountain views.

### LE BAR

*de L'Alpaga*

A true celebration of the terroir, the Bar offers a unique sensory experience, with a breathtaking view of the mountains.

### LE SPA

*de L'Alpaga*

The *Spa de L'Alpaga* offers a fun indoor pool with bubbles and massage jets, a hammam and three treatment rooms. Outside and facing Mont Blanc, the Scandinavian bath, the sauna and the outdoor heated swimming pool will allow you to relax in an exceptional setting.





## CHALET CLOVIS

### SERVICES INCLUDED

- Breakfast served in the restaurant  
7:30 to 10:30am
- Access to the outdoor heated swimming pool, the  
Scandinavian bath and the sauna
  - Access to the spa  
Leisure pool, hammam and fitness area
  - Free shuttle service  
8am to 10.30pm in winter,  
10am to 7.30pm in summer
- Hotel taxes and services  
(excluding tourist tax)
- Hotel concierge service

### OPTIONAL SERVICES

- Room service
- Private car with driver
- Private chef in chalet  
(evening or weekly)
- Breakfast delivery to chalet
  - Secure covered parking  
20€ per vehicule per night



CHALET CLOVIS







CHALET CLOVIS







## CHALET CLOVIS

Because Megève is all about being outdoors and on the move, you can take advantage of a whole range of activities and experiences to get the most out of the area: in both summer and winter: hiking, cycling, fishing, white-water sports, paragliding, hot-airballooning, flying over the surrounding peaks in a plane or helicopter, sledging or dog-sledding.  
You'll be spoiled for choice.



## CONTACT

**Sales Manager**  
Camille Henri

*c.henri.alpaga@beaumier.com*

*events.alpaga@beaumier.com*

+33 (0)6 31 15 65 19

+33 (0)4 50 91 48 72



### GDS

AMADEUS (IA) = YX : MVVALP

SABRE (AA) = YX : 4800

GALILEO/APOLLO (UA) = YX : 16209

WORLDSPAN (IP) = YX : GVAAL

PEGASUS (WB) = YX : 71986