

Chalet Eustache



Beaunier
L'ALPAGA
Alt. 1100 M MEGÈVE ALPES



CHALET EUSTACHE

Away from Megève, perched at an altitude of 1100 metres and facing Mont-Blanc, discover a unique haven of peace. A chalet nestling in the heart of nature, in a cosy little hamlet.

Combining an intimate atmosphere with hotel services, Chalet Eustache is the ideal place for an exceptional holiday.

Covering an area of 270m², this chalet has been designed in the purest Megevan tradition. It is designed to accommodate 8 to 15 people over 3 floors, with 6 bedrooms and 6 bathrooms. Large terraces and balconies invite guests to soak up the sun, facing the mountains. It can be rented by rooms and suites.

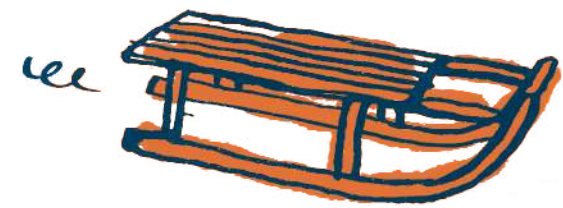




CHALET EUSTACHE



CHALET EUSTACHE

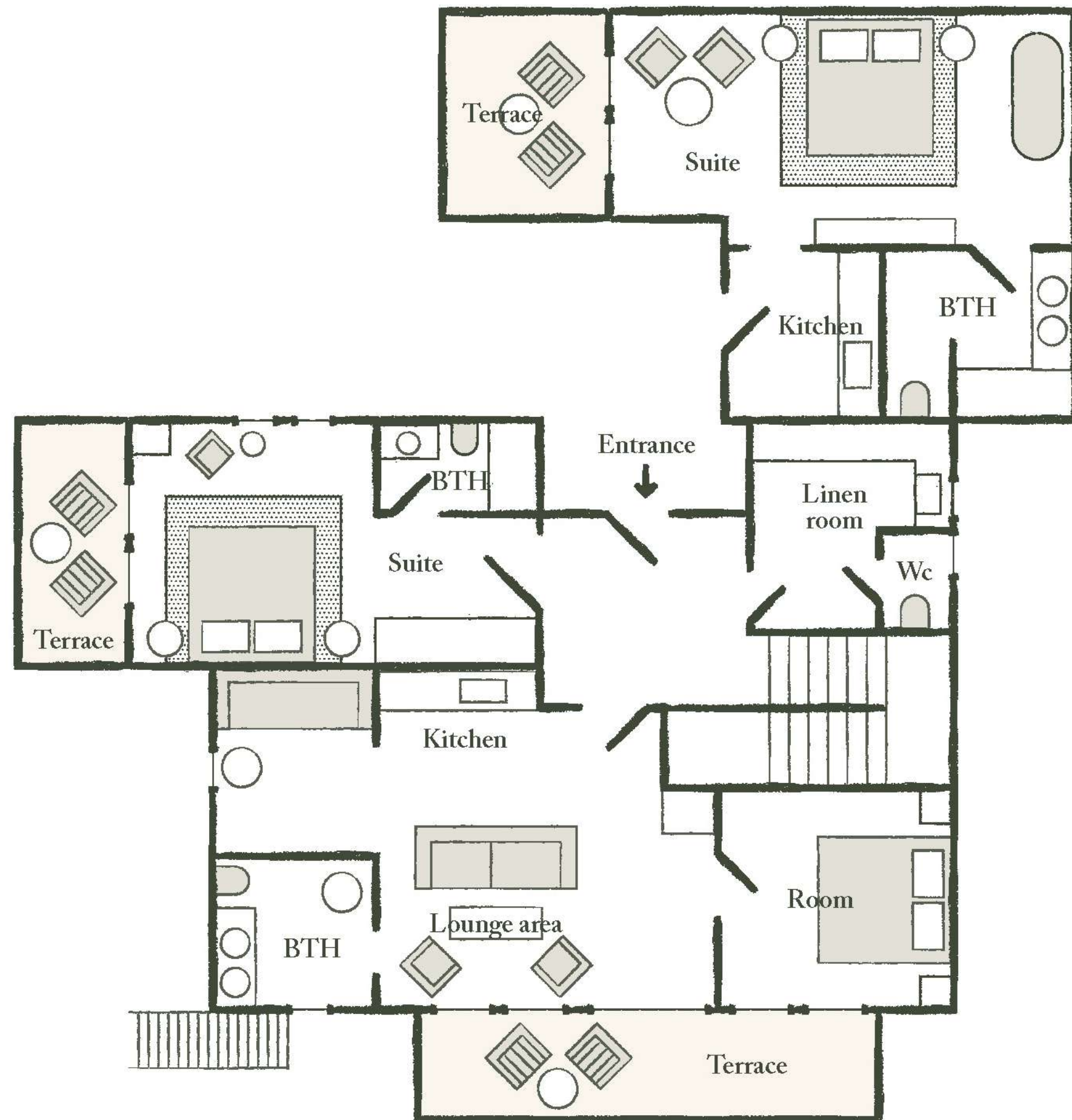




CHALET EUSTACHE







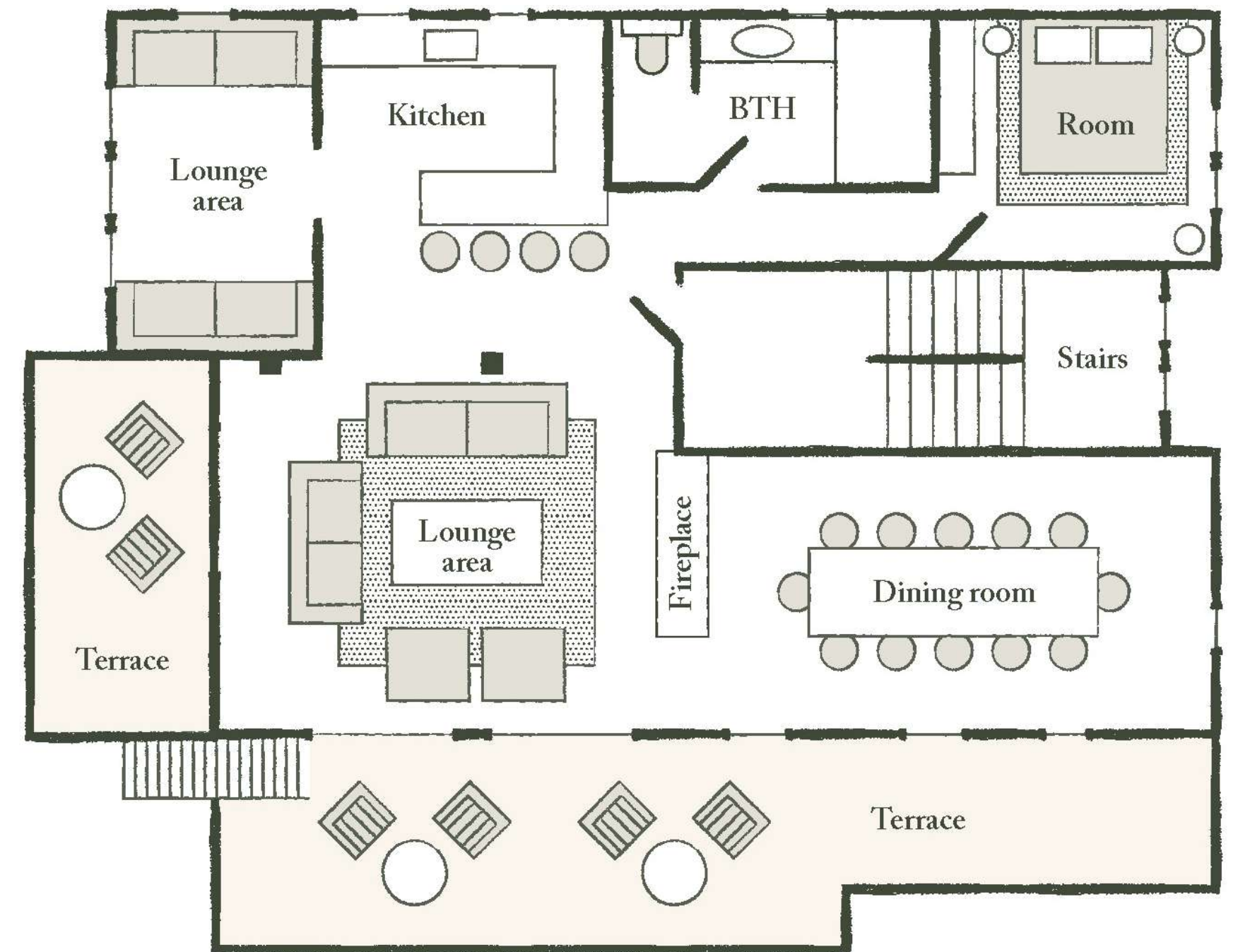
THE GARDEN FLOOR

Has a double bedroom with a bath and a bathroom with a shower, as well as a balcony. This room has its own private entrance adjoining the chalet.

The garden level also includes another double bedroom with shower room and private balcony. Finally, there is a family suite with a living room, bathroom with walk-in shower, double bedroom and sofa bed, plus a terrace.

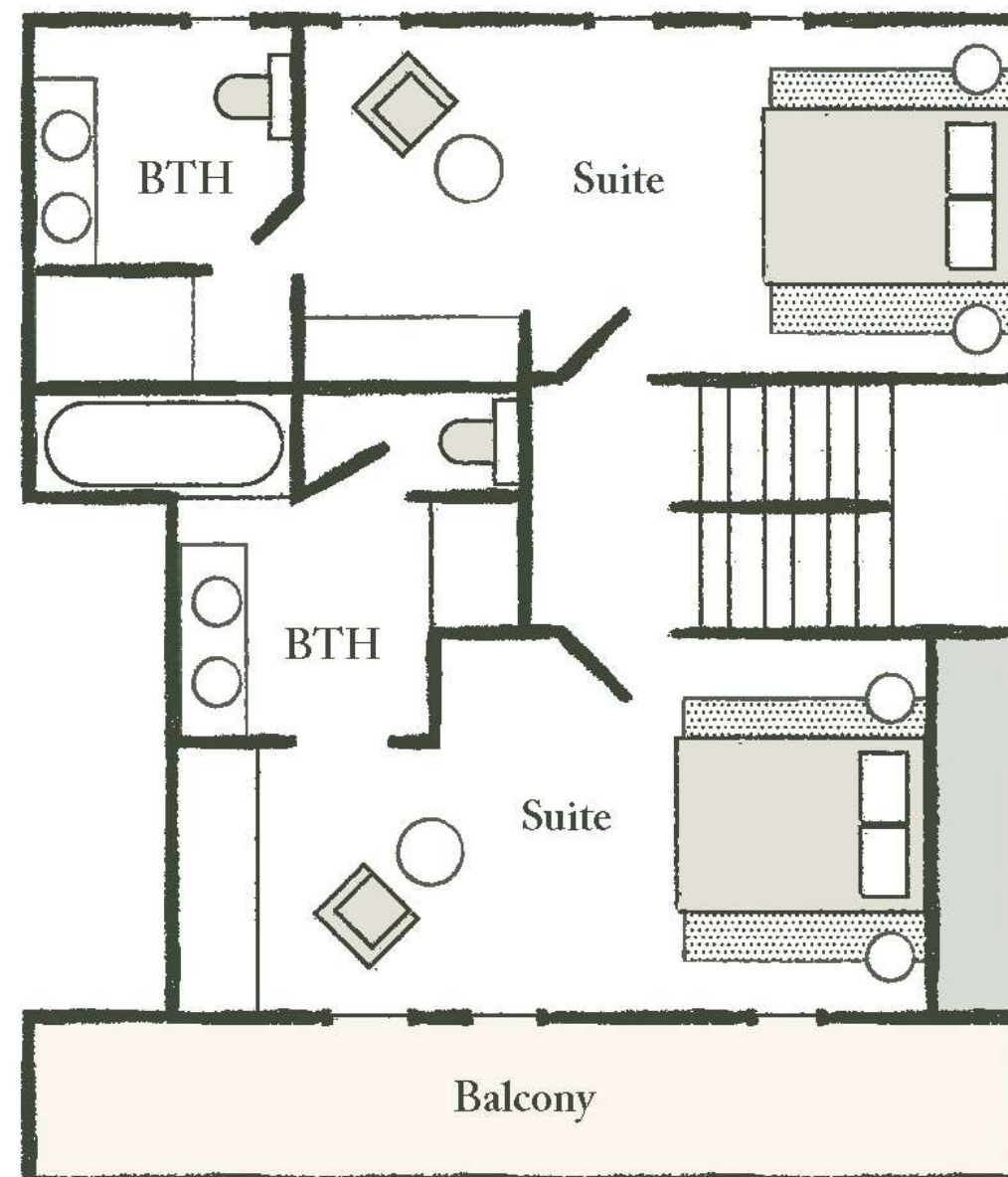
THE MAIN FLOOR

It comprises a suite with a large living room and through fireplace. Adjoining the lounge is the dining room, with its large dining table. The master bedroom has its own shower room. This floor also features a reading area that can accommodate 2 children. Finally, there's the fully-equipped open-plan contemporary kitchen, ideal for fostering family spirit. To make the most of the outdoors, the first floor has 2 private terraces.



THE TOP FLOOR

This floor features a master bedroom with its own balcony and views of Mont-Blanc, as well as a bathroom with shower and bath. There is also a double bedroom with en-suite shower room.



THE HOTEL L'ALPAGA*****

Staying in Chalet Eustache also means having access to the areas and services of L'Alpaga:

LA TABLE

de l'Alpaga

La Table de L'Alpaga, a Michelin-starred restaurant, offers gourmet Savoyard cuisine created by Alexandre Baule. Our Chef's creations celebrate the wealth of local produce with respect and ingenuity.

Only open in winter

le bistrot

de l'Alpaga

Here, Chef Alexandre Baule offers a range of daily specials. A place to meet for lunch, dinner or a cocktail, indoors or on the terrace with its splendid mountain views.

LE BAR

de l'Alpaga

A true celebration of the terroir, the Bar offers a unique sensory experience, with a breathtaking view of the mountains.

LE SPA

de l'Alpaga

The *Spa de L'Alpaga* offers a fun indoor pool with bubbles and massage jets, a hammam and three treatment rooms. Outside and facing Mont Blanc, the Scandinavian bath, the sauna and the outdoor heated swimming pool will allow you to relax in an exceptional setting.





CHALET EUSTACHE

SERVICES INCLUDED

- Breakfast served in the restaurant
7:30 to 10:30am
- Access to the outdoor heated swimming pool, the
Scandinavian bath and the sauna
 - Access to the spa
Leisure pool, hammam and fitness area
 - Free shuttle service
8am to 10.30pm in winter,
10am to 7.30pm in summer
 - Hotel taxes and services
(excluding tourist tax)
 - Hotel concierge service

OPTIONAL SERVICES

- Room service
- Private car with driver
- Private chef in chalet
(evening or weekly)
- Breakfast delivery to chalet
 - Secure covered parking
20€ per vehicule per night



CHALET EUSTACHE







CHALET EUSTACHE





CHALET EUSTACHE

Because Megève is all about being outdoors and on the move, you can take advantage of a whole range of activities and experiences to get the most out of the area: in both summer and winter: hiking, cycling, fishing, white-water sports, paragliding, hot-airballooning, flying over the surrounding peaks in a plane or helicopter, sledging or dog-sledding.
You'll be spoiled for choice.



CONTACT

Sales Manager
Camille Henri

c.henri.alpaga@beaumier.com

events.alpaga@beaumier.com

+33 (0)6 31 15 65 19

+33 (0)4 50 91 48 72



GDS

AMADEUS (IA) = YX : MVVALP

SABRE (AA) = YX : 4800

GALILEO/APOLLO (UA) = YX : I6209

WORLDSPAN (IP) = YX : GVAAL

PEGASUS (WB) = YX : 71986