

Chalet Eustache



Beaunier
L'ALPAGA
Alt. 1100 M MEGÈVE ALPES



CHALET EUSTACHE

Away from Megève, perched at an altitude of 1100 metres and facing Mont-Blanc, discover a unique haven of peace. A chalet nestling in the heart of nature, in a cosy little hamlet.

Combining an intimate atmosphere with hotel services, Chalet Eustache is the ideal place for an exceptional holiday.

Covering an area of 270m², this chalet has been designed in the purest Megevan tradition. It is designed to accommodate 8 to 15 people over 3 floors, with 6 bedrooms and 6 bathrooms. Large terraces and balconies invite guests to soak up the sun, facing the mountains. It can be rented by rooms and suites.

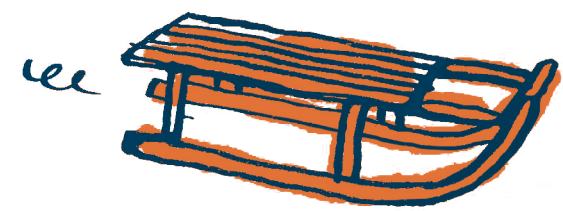




CHALET EUSTACHE



CHALET EUSTACHE



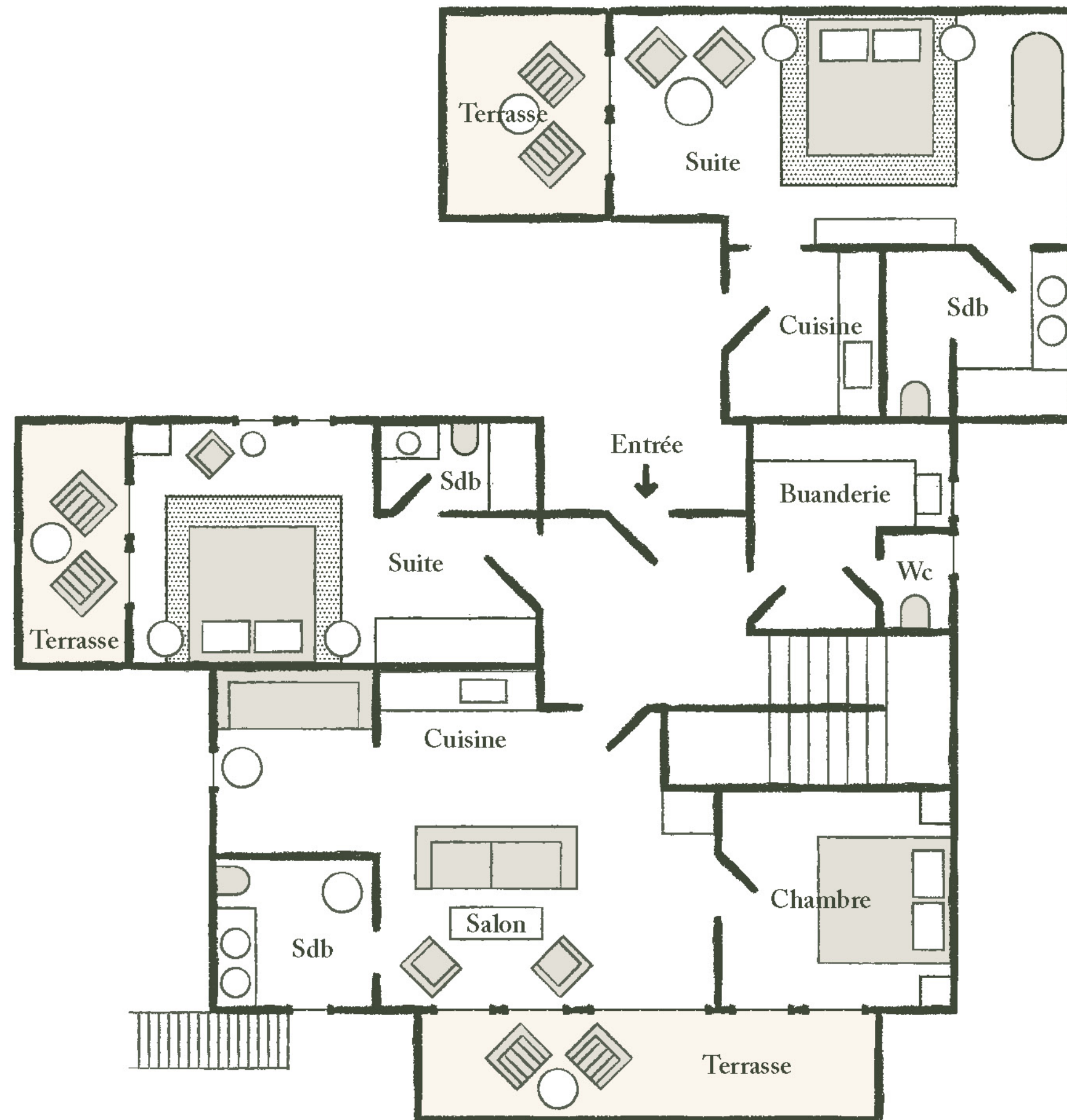


CHALET EUSTACHE



CHALET EUSTACHE





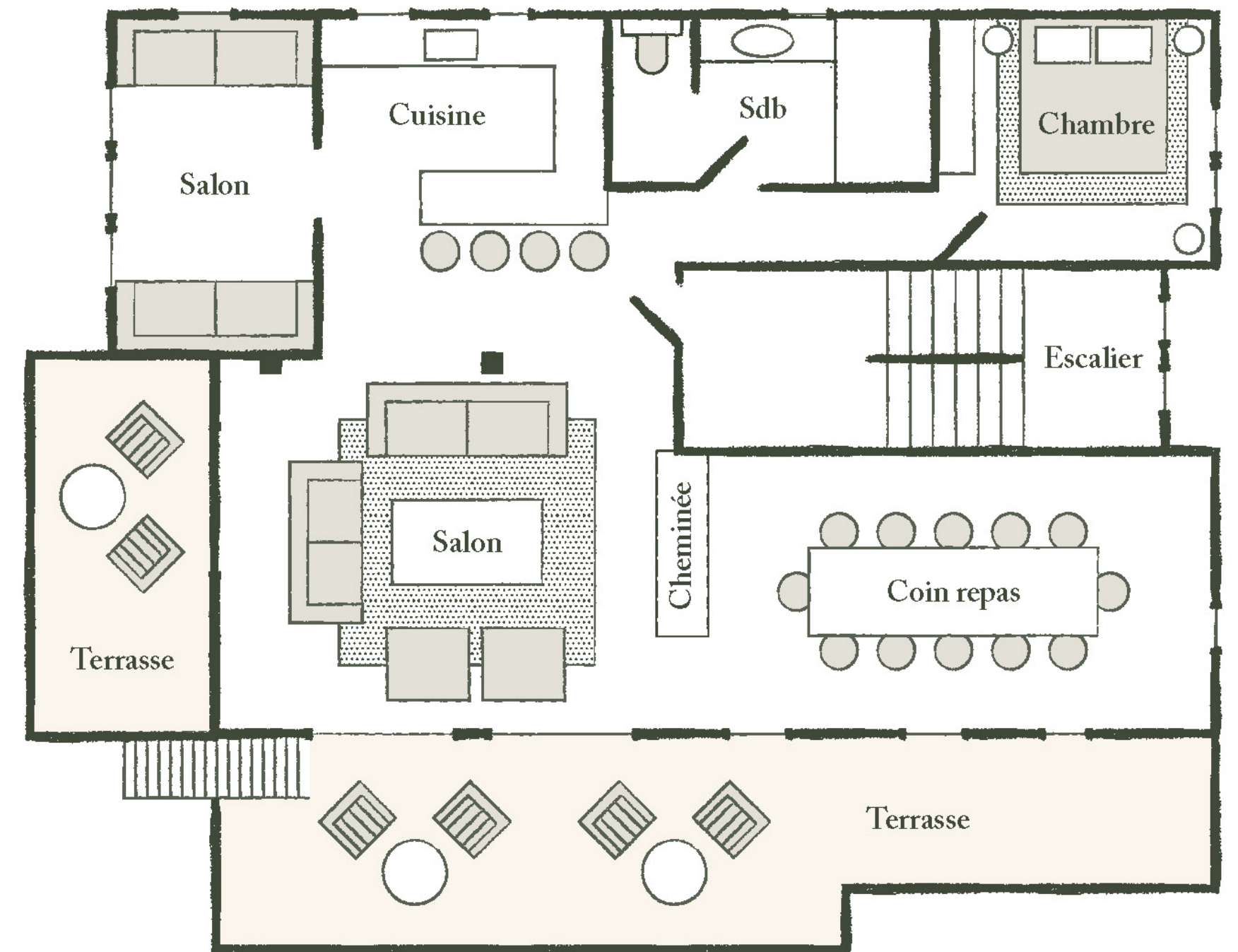
THE GARDEN FLOOR

Has a double bedroom with a bath and a bathroom with a shower, as well as a balcony. This room has its own private entrance adjoining the chalet.

The garden level also includes another double bedroom with shower room and private balcony. Finally, there is a family suite with a living room, bathroom with walk-in shower, double bedroom and sofa bed, plus a terrace.

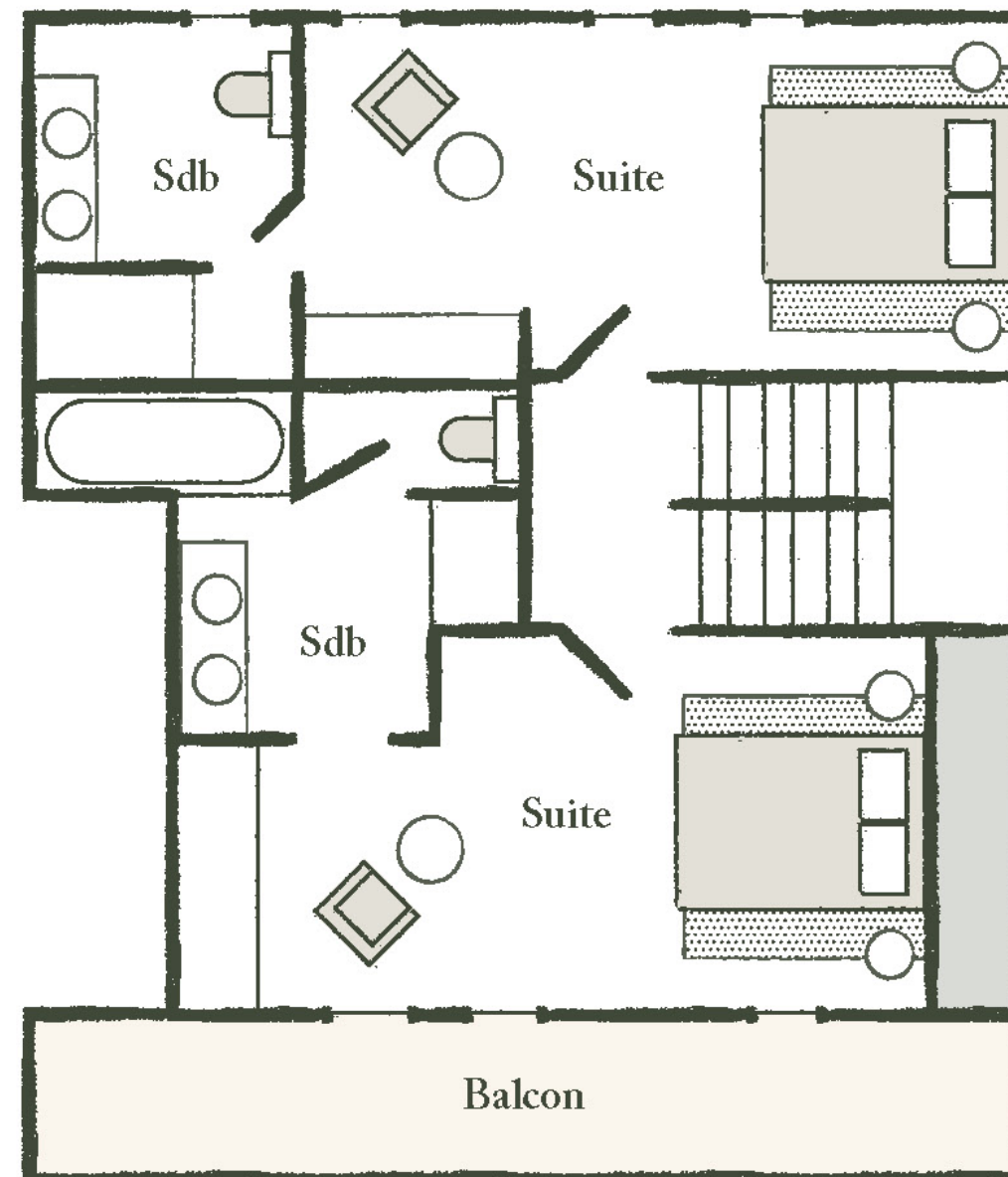
THE MAIN FLOOR

It comprises a suite with a large living room and through fireplace. Adjoining the lounge is the dining room, with its large dining table. The master bedroom has its own shower room. This floor also features a reading area that can accommodate 2 children. Finally, there's the fully-equipped open-plan contemporary kitchen, ideal for fostering family spirit. To make the most of the outdoors, the first floor has 2 private terraces.



THE TOP FLOOR

This floor features a master bedroom with its own balcony and views of Mont-Blanc, as well as a bathroom with shower and bath. There is also a double bedroom with en-suite shower room.



THE HOTEL L'ALPAGA*****

Staying in Chalet Eustache also means having access to the areas and services of L'Alpaga:

LA TABLE

de l'Alpaga

In 2023, the *La Table de l'Alpaga* restaurant was awarded 1 star in the Michelin Guide. This gastronomic restaurant offers a gourmet and sparkling cuisine prepared by our Chef Alexandre Baule, which puts the mountain in the spotlight and offers a contemporary and elegant setting.

le bistrot

de l'Alpaga

This restaurant offers bistro lounge cuisine by Chef Alexandre Baule. It's the ideal place for an informal lunch or dinner.

LE BAR

de l'Alpaga

Indoors or on the terrace, this is the perfect place to enjoy a refreshing drink or cocktail, prepared by our mixologist.

LE SPA

de l'Alpaga

The *Spa de l'Alpaga* has a fun indoor pool with bubbles and massage jets, a hammam and two treatment rooms. Outside, and facing Mont-Blanc, the Scandinavian bath and the outdoor heated swimming pool will allow you to relax in an exceptional setting.



CHALET EUSTACHE

SERVICES INCLUDED

- Breakfast served in the restaurant
 - Internet access
- Access to the outdoor heated swimming pool
 - Access to the spa
(leisure pool, hammam, Scandinavian bath, sauna facing Mont-Blanc and fitness area)
 - Free shuttle service from 8am to 11pm
- Hotel taxes and services (excluding tourist tax)
- Hotel concierge service
 - Room service

OPTIONAL SERVICES

- Private car with driver
- Private chef in chalet (evening or weekly)
- Breakfast delivery to chalet
- Secure covered parking







CHALET EUSTACHE

Because Megève is all about being outdoors and on the move, you can take advantage of a whole range of activities and experiences to get the most out of the area: snowshoeing and ski touring to get close to the snow, flying over Mont-Blanc, paragliding, tobogganing or dog sledding — you'll be spoilt for choice.



CONTACT

Sales Manager
Camille Henri

c.henri.alpaga@beaumier.com

+33 (0)6 31 15 65 19

+33 (0)4 50 91 48 72



GDS

AMADEUS (IA) = YX : MVVALP

SABRE (AA) = YX : 4800

GALILEO/APOLLO (UA) = YX : 16209

WORLDSPAN (IP) = YX : GVAAL

PEGASUS (WB) = YX : 71986